



# medicalbees

System-driven Surgery  
Operieren mit System

Orthopädie | Orthopaedics







**COBB**

280 mm - 11"	B	Fig.
MB1-04-006-00	2.0 mm	0000
MB1-04-006-02	2.5 mm	000
MB1-04-006-04	3.0 mm	00
MB1-04-006-06	3.5 mm	0
MB1-04-006-08	4.0 mm	1
MB1-04-006-10	4.5 mm	2
MB1-04-006-12	5.0 mm	3
MB1-04-006-14	5.5 mm	4
MB1-04-006-16	6.5 mm	5
MB1-04-006-18	8.0 mm	6

Scharfe Löffel, gerade, mit massivem Aluminiumgriff, eloxiert

Bone curettes, straight, with massive aluminium handle, anodized

**COBB**

280 mm - 11"	B	Fig.
MB1-04-002-00	2.0 mm	0000
MB1-04-002-02	2.5 mm	000
MB1-04-002-04	3.0 mm	00
MB1-04-002-06	3.5 mm	0
MB1-04-002-08	4.0 mm	1
MB1-04-002-10	4.5 mm	2
MB1-04-002-12	5.0 mm	3
MB1-04-002-14	5.5 mm	4
MB1-04-002-16	6.5 mm	5
MB1-04-002-18	8.0 mm	6

Scharfe Löffel, gerade, mit hohlem rostfreiem Kreuzrändergriff

Bone curettes, straight, with hollow, stainless knurled handle



**COBB**

280 mm - 11"	B	Fig.
MB1-04-008-00	2.0 mm	0000
MB1-04-008-02	2.5 mm	000
MB1-04-008-04	3.0 mm	00
MB1-04-008-06	3.5 mm	0
MB1-04-008-08	4.0 mm	1
MB1-04-008-10	4.5 mm	2
MB1-04-008-12	5.0 mm	3
MB1-04-008-14	5.5 mm	4
MB1-04-008-16	6.5 mm	5
MB1-04-008-18	8.0 mm	6

Scharfe Löffel, gebogen, mit massivem Aluminiumgriff, eloxiert

Bone curettes, curved, with massive aluminium handle, anodized

**COBB**

280 mm - 11"	B	Fig.
MB1-04-004-00	2.0 mm	0000
MB1-04-004-02	2.5 mm	000
MB1-04-004-04	3.0 mm	00
MB1-04-004-06	3.5 mm	0
MB1-04-004-08	4.0 mm	1
MB1-04-004-10	4.5 mm	2
MB1-04-004-12	5.0 mm	3
MB1-04-004-14	5.5 mm	4
MB1-04-004-16	6.5 mm	5
MB1-04-004-18	8.0 mm	6

Scharfe Löffel, gebogen, mit hohlem rostfreiem Kreuzrändergriff

Bone curettes, curved, with hollow, stainless knurled handle



## SMITH-PETERSEN

200 mm - 8"	B
MB1-06-005-01	6 mm - 1/4"
MB1-06-005-03	9 mm - 3/8"
MB1-06-005-05	12 mm - 1/2"
MB1-06-005-07	16 mm - 5/8"
MB1-06-005-09	19 mm - 3/4"
MB1-06-005-11	25 mm - 1"
MB1-06-005-13	32 mm - 1 1/4"

Osteotome, gerade  
Osteotomes, straight



## SMITH-PETERSEN

200 mm - 8"	B
MB1-06-007-01	6 mm - 1/4"
MB1-06-007-03	9 mm - 3/8"
MB1-06-007-05	12 mm - 1/2"
MB1-06-007-07	16 mm - 5/8"
MB1-06-007-09	19 mm - 3/4"
MB1-06-007-11	25 mm - 1"
MB1-06-007-13	32 mm - 1 1/4"

Hohlmeißel, gerade  
Gouges, straight



## SMITH-PETERSEN

200 mm - 8"	B
MB1-06-006-01	6 mm - 1/4"
MB1-06-006-03	9 mm - 3/8"
MB1-06-006-05	12 mm - 1/2"
MB1-06-006-07	16 mm - 5/8"
MB1-06-006-09	19 mm - 3/4"
MB1-06-006-11	25 mm - 1"
MB1-06-006-13	32 mm - 1 1/4"

Osteotome, gebogen  
Osteotomes, curved



## SMITH-PETERSEN

200 mm - 8"	B
MB1-06-008-01	6 mm - 1/4"
MB1-06-008-03	9 mm - 3/8"
MB1-06-008-05	12 mm - 1/2"
MB1-06-008-07	16 mm - 5/8"
MB1-06-008-09	19 mm - 3/4"
MB1-06-008-11	25 mm - 1"
MB1-06-008-13	32 mm - 1 1/4"

Hohlmeißel, gebogen  
Gouges, curved



MB1-06-010-01	180 mm – 7"
Griff alleine, mit Schraube SW 3 mm, ohne Schlüssel Handle only, with screw SW 3 mm, without key	

Auswechselbare Klängen  
Interchangeable blades



	B
MB1-06-011-00	5 mm
MB1-06-011-05	10 mm
MB1-06-011-10	16 mm
MB1-06-011-15	25 mm

Flachmeißel  
Chisels



	B
MB1-06-012-00	5 mm
MB1-06-012-05	10 mm
MB1-06-012-10	16 mm
MB1-06-012-15	25 mm

Osteotome  
Osteotomes



	Radius
MB1-06-013-00	50 mm
MB1-06-013-05	60 mm
MB1-06-013-10	70 mm

Hohlmeißel  
Gouges



MB1-06-020	SW 3 mm
Schraube Screw	

MB1-06-020-05	SW 3.5 mm
Schraube, mit Schraubensicherung Screw, with screw retention	



MB1-06-019	SW 3 mm
Schlüssel Key	

MB1-06-019-05	SW 3.5 mm
Schlüssel Key	



HOKE

140 mm – 5"	B
MB1-06-026-01	3 mm – $\frac{1}{8}$ "
MB1-06-026-03	5 mm – $\frac{3}{16}$ "
MB1-06-026-05	6 mm – $\frac{1}{4}$ "
MB1-06-026-07	8 mm – $\frac{5}{16}$ "
MB1-06-026-09	9 mm – $\frac{3}{8}$ "
MB1-06-026-11	12 mm – $\frac{1}{2}$ "
MB1-06-026-13	15 mm – $\frac{5}{8}$ "

Osteotome, gerade, Griff Schlüsselweite 8 mm Achtkant  
Osteotomes, straight, handle octagonal  $\frac{5}{16}$ "



HOKE

140 mm – 5"	B
MB1-06-028-01	3 mm – $\frac{1}{8}$ "
MB1-06-028-03	5 mm – $\frac{3}{16}$ "
MB1-06-028-05	6 mm – $\frac{1}{4}$ "
MB1-06-028-07	8 mm – $\frac{5}{16}$ "
MB1-06-028-09	9 mm – $\frac{3}{8}$ "
MB1-06-028-11	12 mm – $\frac{1}{2}$ "
MB1-06-028-13	15 mm – $\frac{5}{8}$ "

Osteotome, gebogen, Griff Schlüsselweite 8 mm Achtkant  
Osteotomes, curved, handle octagonal  $\frac{5}{16}$ "



SMILLIE

MB1-06-040-04  
170 mm –  $6\frac{3}{4}$ "

Meniskusmesser links  
Meniscus knife left



SMILLIE

MB1-06-040-06  
170 mm –  $6\frac{3}{4}$ "

Meniskusmesser rechts  
Meniscus knife right



SMILLIE

MB1-06-042-02  
170 mm –  $6\frac{3}{4}$ "

Meniskusmesser  
flach, gerade  
Meniscus knife flat, straight



**MB1-06-034-05**

280 mm – 11"

Gerade  
Straight



**MB1-06-034-10**

280 mm – 11"

Leicht gebogen  
Slightly curved



**MB1-06-034-15**

280 mm – 11"

Stark gebogen  
Full curved



**MB1-06-034-20**

280 mm – 11"

Rückwärts gebogen  
Reverse curved

**COBB**

Hohlmeißel mit Edelstahlgriff, hohl, Arbeitsteil 7.5 mm breit  
Gouges with stainless steel handle, hollow, tip width  $\frac{9}{32}$ "



**MB1-06-035-06**

240 mm – 9½"

Gerade  
Straight



**MB1-06-035-12**

240 mm – 9½"

Leicht gebogen  
Slightly curved



**MB1-06-035-15**

240 mm – 9½"

Stark gebogen  
Full curved



**MB1-06-035-09**

240 mm – 9½"

Rückwärts gebogen  
Reverse curved

**COBB**

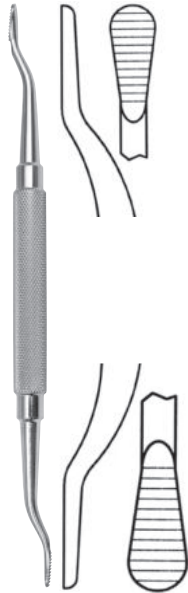
Hohlmeißel mit Sechskant-Griff, hohl, Arbeitsteil 7.5 mm breit  
Gouges with hexagon handle, hollow, tip width  $\frac{9}{32}$ "



**MB1-08-001-05**

210 mm – 8 ¼"

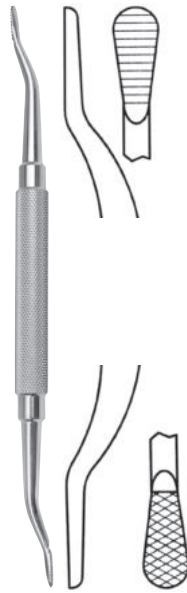
Knochenfeile Nr. 10  
Bone file No. 10



**MB1-08-001-10**

180 mm – 7"

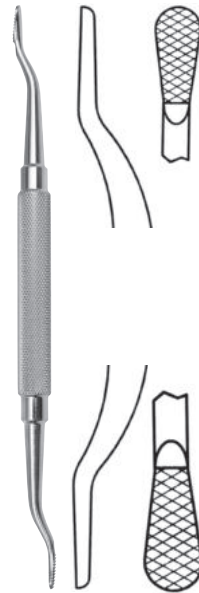
Knochenfeile Nr. 12  
Bone file No. 12



**MB1-08-001-15**

180 mm – 7"

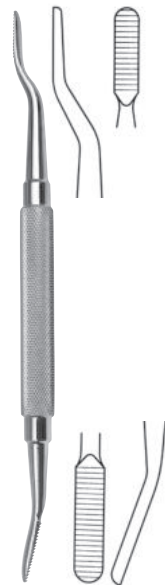
Knochenfeile Nr. 12 A  
Bone file No. 12 A



**MB1-08-001-20**

180 mm – 7"

Knochenfeile Nr. 12 CA  
Bone file No. 12 CA



**MB1-08-001-25**

180 mm – 7"

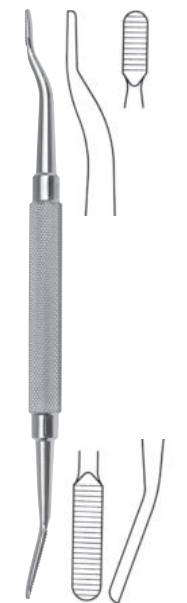
Knochenfeile Nr. 33  
Bone file No. 33



**MB1-08-001-30**

185 mm – 7 ¼"

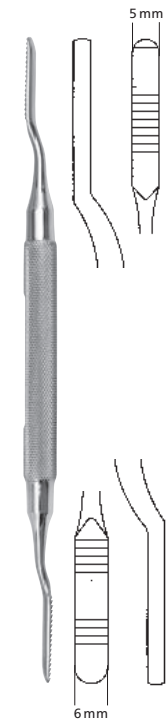
Knochenfeile Nr. 45  
Bone file No. 45



**MB1-08-001-35**

185 mm – 7 ¼"

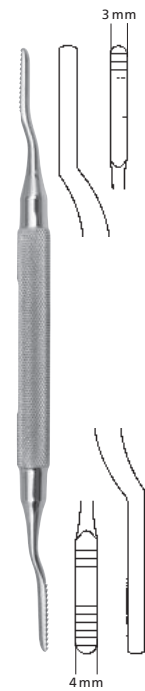
Knochenfeile Nr. 64  
Bone file No. 64



**POLOKOFF**

**MB1-08-001-40**

200 mm – 8"



**POLOKOFF**

**MB1-08-001-42**

190 mm – 7 ½"






---

**MB1-15-003-02**

---

190 mm – 7½"

---

Knochenmeßzirkel, gebogen  
Bone calipers, curved



**RANEY**

---

**MB1-20-004-05**

---

Kopfhautclip, VE 1 Beutel (12 Stück)  
Scalp clip, PAK: 1 bag (12 pieces)




---

**MB1-15-002-02**

---

200 mm – 8"

---

Knochenmeßzirkel, gerade, spitz  
Bone calipers, straight, pointed




---

**MB1-15-004-02**

---

180 mm – 7"

---

Knochenmeßzirkel, abgewinkelt, stumpf  
Bone calipers, angled, blunt

**PERCY**

---

**MB1-15-020-01**

---

Amputationsschild, Griffe abnehmbar  
Amputation retractor, removable handles

**SWEET**

---

**MB1-15-022-01**

---

Amputationsschild  
Amputation retractor

**COTTLE**

---

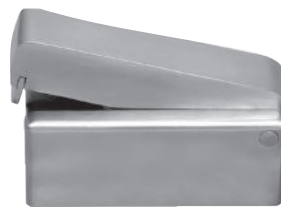
**MB1-15-040-10**

---

15 x 89 mm

---

Entnahmepinzette  
Cartilage removing forceps

**COTTLE**

---

**MB1-15-040-02**

---

Knorpelquetsche  
Cartilage crusher

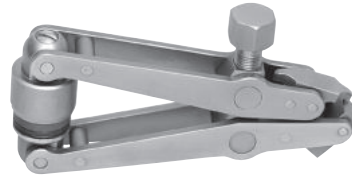


**CRULL**

MB1-15-030-02

200 mm – 8"

Hüftmesser  
Acetabular knife



MB1-15-050-01

Plattenspanner mit Gelenken und Bohrung Ø 5.0 mm  
Tension device, articulated, hole Ø 5.0 mm



MB1-15-062-02

120 mm – 4¾"

Biegebolzen für Drähte, Bohrung Ø 2.8 mm  
Bending rod, hole Ø 2.8 mm



**KUNTSCHER**

MB1-15-306-02

Hautschutzblech  
Skin protector



MB1-15-520-04	3 Loch / hole	Ø 1.2 mm
MB1-15-520-06	3 Loch / hole	Ø 2.0 mm

Zielbohr-Büchsen  
Parallel drill guides and drill sleeves



MB1-15-530-02	Ø 3.2 mm	Ø 4.5 mm
MB1-15-530-04	Ø 2.5 mm	Ø 3.5 mm

Steckbohr-Büchsen  
Insert drill sleeves



MB1-15-532-02	Ø 1.5 mm	Ø 1.1 mm
MB1-15-532-04	Ø 2.0 mm	Ø 1.5 mm
MB1-15-532-05	Ø 2.7 mm	Ø 1.25 mm
MB1-15-532-06	Ø 2.7 mm	Ø 2.0 mm
MB1-15-532-08	Ø 3.5 mm	Ø 2.5 mm
MB1-15-532-10	Ø 4.5 mm	Ø 3.2 mm
MB1-15-532-11	Ø 4.5 mm	Ø 3.2 mm
MB1-15-532-12	Ø 6.5 mm	Ø 3.2 mm

Doppelbohr-Büchsen  
Double drill sleeves



MB1-15-536-02	Ø 3.2 mm
---------------	----------

Büchse für Halbbohr und Formplatte  
Tap sleeve



MB1-15-538-02	Ø 1.5 mm	Ø 2.0 mm
MB1-15-538-04	Ø 2.0 mm	Ø 2.7 mm
MB1-15-538-06	Ø 2.5 mm	Ø 3.5 mm
MB1-15-538-08	Ø 3.2 mm	Ø 4.5 mm

Spanngleit-Bohr-Büchsen  
Drill guides



MB1-15-550-06	55 mm	1.0 mm
MB1-15-550-02	60 mm	1.7 mm
MB1-15-550-04	110 mm	2.5 mm

Tiefenmeßlehre    Meßbereich    Ø Nadel  
Screw depth gauge    Scale    Ø Needle

Weitere Modelle auf Anfrage  
Additional models available upon request



CAROLL

MB1-20-002

140 mm – 5½"

Fingerwinkelmesser  
Goniometer



MARCHAC

MB1-20-018-01

0 - 80 mm

Meßschieber  
Caliper



TOWNLY FEMUR

MB1-20-018-10

0 - 100 mm

Meßschieber  
Caliper

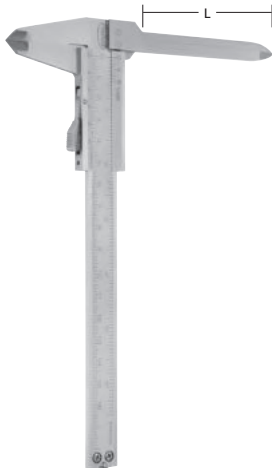


MB1-20-022-05

0 - 145 mm

L: 115 mm

Meßschieber  
Caliper



MB1-20-028-05

0 - 125 mm

L: 100 mm

Meßschieber  
Caliper



WEISENBACH

MB1-20-030-02

150 mm – 6"

MB1-20-030-06

300 mm – 12"

Instrumentenhalter  
Forceps holder



**MB1-15-001-04**

Drahtwirbler  
Jet wire twister



**MB1-20-090-05**

Schraubenhaltepinzette  
Maulbreite 5 mm  
Screw holding forceps  
Working part 5 mm



**MB1-20-090-10**

Schraubenhaltepinzette  
Maulbreite 7 mm  
Screw holding forceps  
Working part 7 mm



**MB2-15-005-01**

146 mm – 5½"

Biegeeisen für 2.7 mm  
und 3.5 mm Platten  
Bending Iron for 2.7 mm  
and 3.5 mm plates



**MB2-15-005-05**

146 mm – 5½"

Biegeeisen für 3.5 mm  
und 2.7 mm Platten  
Bending Iron for 3.5 mm  
and 2.7 mm plates



**MB2-15-007-01**

120 mm – 4¾"

Biegeeisen für  
1.8 mm Platten  
Bending Iron for  
1.8 mm plates



**MB2-15-010-01**

194 mm – 7<sup>5</sup>/<sub>8</sub>"

Biegeeisen für 3.5 mm  
und 4.5 mm Platten  
Bending Iron for 3.5 mm  
and 4.5 mm plates



**KUNTSCHER**

**MB2-15-020-02**

290 mm – Ø 9 mm

Knochenahle,  
nach unten gebogen  
Awl, curved downwards



**KUNTSCHER**

**MB2-15-020-04**

290 mm – Ø 9 mm

Knochenahle,  
nach oben gebogen  
Awl, curved upwards



**MB1-20-100-01**

160 mm – 6½"

Knochenahle, gerade  
Bone awl, straight



**MB1-20-100-03**

160 mm – 6½"

Knochenahle, gebogen  
Bone awl, curved

